



**India Meteorological Department
Earth System Science Organisation
(Ministry of Earth Sciences)**

BULLETIN NO.: 03 (Land 02/2017)

TIME OF ISSUE: 1400 HOURS IST

DATED: 09.10.2017

FROM: INDIA METEOROLOGICAL DEPARTMENT (FAX NO. 24643965/24699216/24623220)

**TO: CONTROL ROOM, NDM, MINISTRY OF HOME AFFAIRS (FAX.NO. 23093750)
CONTROL ROOM NDMA (FAX.NO. 26701729)
CABINET SECRETARIAT (FAX.NO.23793144)
PS TO HON'BLE MINISTER FOR S & T AND EARTH SCIENCES (FAX NO.23316745)
SECRETARY, MOES, (FAX NO. 24629777)
SECRETARY, DST (FAX NO. 26863847/-2418)
H.Q. (INTEGRATED DEFENCE STAFF AND CDS) (FAX NO. 23005137/23005147)
DIRECTOR GENERAL, DOORDARSHAN (23385843)
DIRECTOR GENERAL, AIR (25843825)
PIB MOES (FAX NO. 23389042)
UNI (FAX NO. 23355841)
D.G. NATIONAL DISASTER RESPONSE FORCE (NDRF) (FAX NO. 26105912)
CHIEF SECRETARY, GOVT.OF WEST BENGAL (033-22144328)
CHIEF SECRETARY, GOVT.OF ODISHA (0674-2536660)
CHIEF SECRETARY, GOVT.OF CHATTISGARH (0771-2221206)
CHIEF SECRETARY, GOVT.OF JHARKHAND (0651-2400255)
CHIEF SECRETARY, GOVT.OF BIHAR (0612-2217085, 2938039)
DIRECTOR, PUNCTUALITY, INDIAN RAILWAYS (FAX NO. 23388503)**

Sub: Deep Depression over Gangetic West Bengal

Latest observations, Doppler Weather Radar, Kolkata & Satellite imageries indicate that the deep depression over Gangetic West Bengal moved west-northwestwards with a speed of about 09 kmph in past 06 hours. It lay centred at 1130 hrs IST of today, the 09th October, 2017 over Gangetic West Bengal near Latitude 22.5° N and Longitude 88.3 °E, close to Kolkata. The system is very likely to continue to move slowly west-northwestwards during next 24 hours and move northwards thereafter.

Warning:

(i) Heavy Rainfall warning:

- Rainfall at most places with heavy to very heavy rainfall at a few places and extremely heavy rainfall at isolated places is very likely over Gangetic West Bengal during next 24 hours and isolated heavy to very heavy rainfall during subsequent 24 hours.
- Rainfall at most places with heavy to very heavy rainfall at isolated places is very likely over north Odisha and Jharkhand during next 48 hours.
- Rainfall at many places with heavy rainfall at isolated places very likely over Chhattisgarh & south Odisha on 10th and over Bihar on 10th & 11th October.

(ii) Wind warning:

- Squally winds speed reaching 45-55 kmph gusting to 65 kmph would prevail along & off north Odisha and West Bengal coasts during next 24 hours.
- Squally wind speed reaching 45-55 kmph gusting to 65 kmph would prevail over Gangetic West Bengal and 30-40 kmph gusting to 50 kmph very likely over adjoining areas of Odisha & Jharkhand during next 24 hours.

(iii) Sea condition: State of Sea very likely to be rough to very rough along & off north Odisha and West Bengal coasts during next 24 hours.

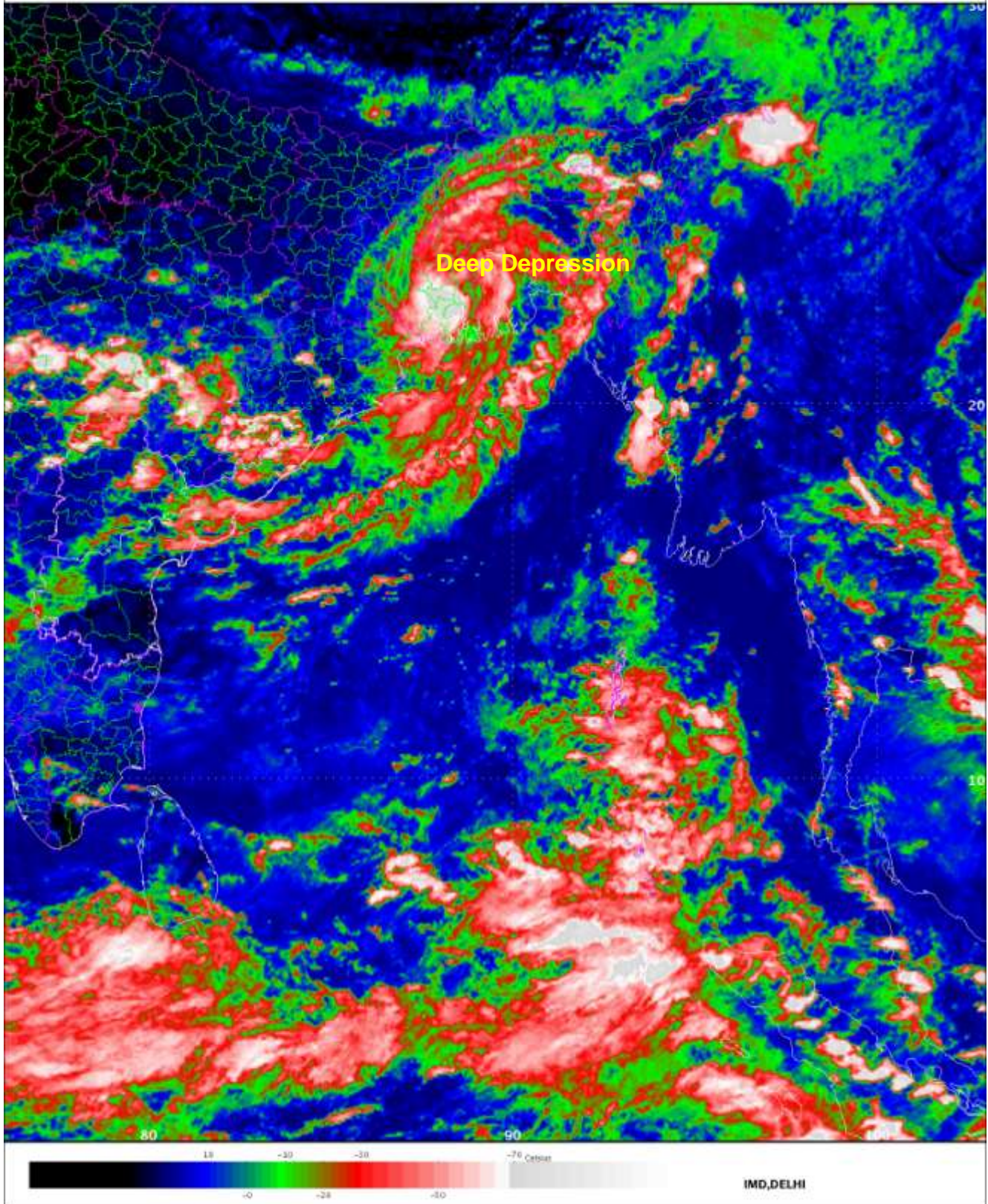
(iv) Fishermen Warning: Fishermen along & off north Odisha and West Bengal coasts are advised not to venture into Sea during next 24 hours.

The next bulletin will be issued at 2030 hrs IST of 09th October 2017.

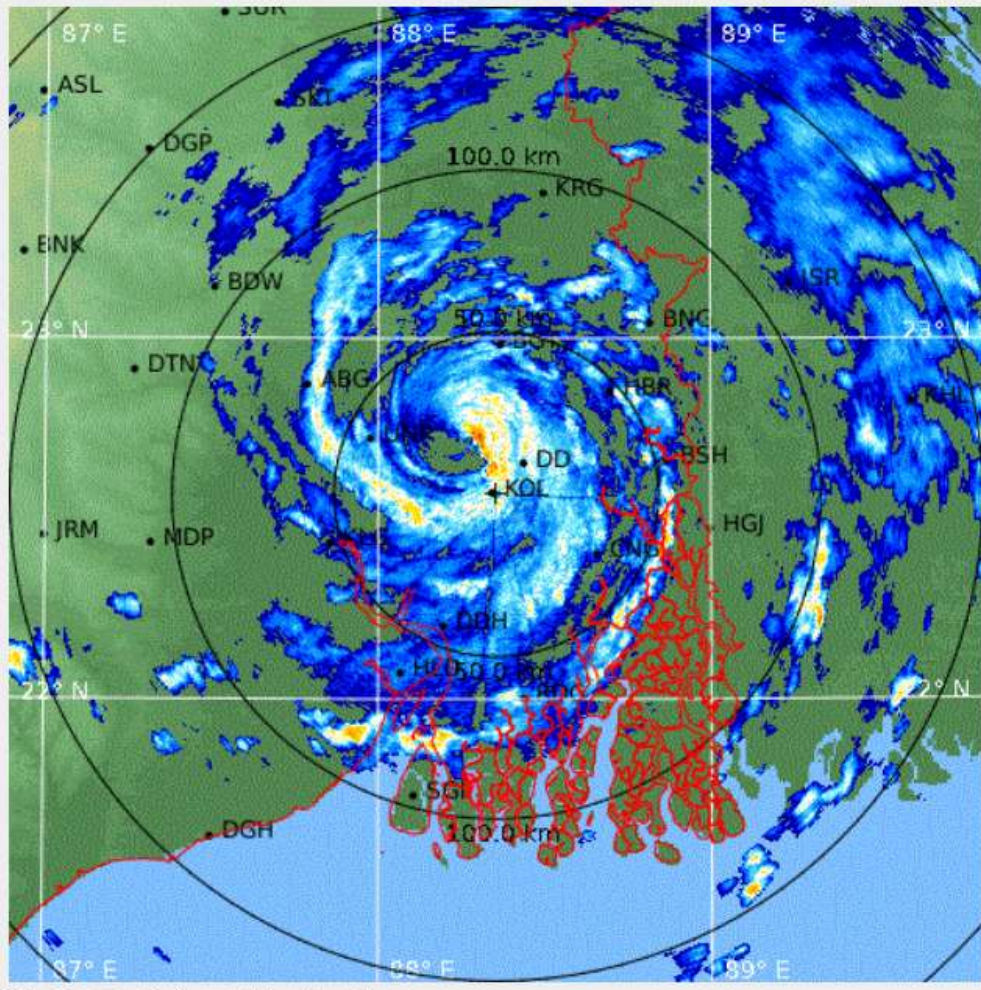
**(Naresh Kumar)
Scientist-D, RSMC, New Delhi**

Copy to: DFDD, Pune/ACWC Kolkata /ACWC Chennai/CWC Vishakhapatnam/CWC Bhubaneswar/MC Ranchi, Raipur, Patna.

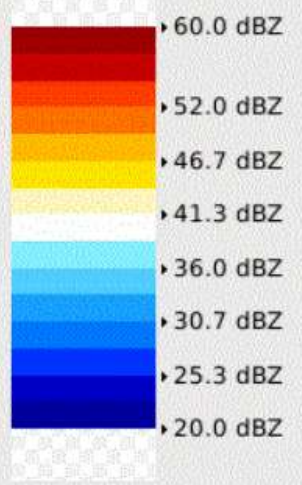
Spatial rainfall distribution: Isolated: <25%, A few: 26-50%, Many: 51-75%, Most: 76-100%
Rainfall amount (mm): Heavy rain: 64.5 – 114.5, Very heavy rain: 114.6 – 204.4, Extremely heavy rain: 204.5 or more.



Spatial rainfall distribution: Isolated: <25%, A few: 26-50%, Many: 51-75%, Most: 76-100%
Rainfall amount (mm): Heavy rain: 64.5 – 114.5, Very heavy rain: 114.6 – 204.4, Extremely heavy rain: 204.5 or more.



PPI (dBZ)
08:01 / 09-Oct-2017
Kolkata



Pdf File: 150Z.ppi
 Clutter Filter: IIRDoppler 8
 Time sampling: 62
 PRF: 600 Hz
 Range: 150 km
 Resolution: 0.600 km/pixel
 Elevation: 0.2 deg
 Data: Radar Data
 Rainbow® SELEX-SI

Plan Position Indicator (Z) - Close Range

press x to clos

Spatial rainfall distribution: Isolated: <25%, A few: 26-50%, Many: 51-75%, Most: 76-100%
Rainfall amount (mm): Heavy rain: 64.5 – 114.5, Very heavy rain: 114.6 – 204.4, Extremely heavy rain: 204.5 or more.