



**India Meteorological Department  
Earth System Science Organisation  
(Ministry of Earth Sciences)**

**BULLETIN NO. : 06 (BOB/10/2018)**

**TIME OF ISSUE: 0830 HOURS IST**

**DATED: 14.12.2018**

**FROM: INDIA METEOROLOGICAL DEPARTMENT (FAX NO. 24643965/24699216/24623220)**

**TO: CONTROL ROOM, NDM, MINISTRY OF HOME AFFAIRS (FAX.NO. 23093750)**

**CONTROL ROOM NDMA (FAX.NO. 26701729)**

**CABINET SECRETARIAT (FAX.NO.23012284, 23018638)**

**PS TO HON'BLE MINISTER FOR S & T AND EARTH SCIENCES (FAX NO.23316745)**

**SECRETARY, MOES, (FAX NO. 24629777)**

**H.Q. (INTEGRATED DEFENCE STAFF AND CDS) (FAX NO. 23005137/23005147)**

**DIRECTOR GENERAL, DOORDARSHAN (23385843)**

**DIRECTOR GENERAL, AIR (23421105, 23421219)**

**PIB MOES (FAX NO. 23389042)**

**UNI (FAX NO. 23355841)**

**D.G. NATIONAL DISASTER RESPONSE FORCE (NDRF) (FAX NO. 26105912)**

**DIRECTOR, PUNCTUALITY, INDIAN RAILWAYS (FAX NO. 23388503)**

**CHIEF SECRETARY, GOVT. OF ODISHA (FAX NO. 0674 -2536660)**

**CHIEF SECRETARY, ANDHRA PRADESH (FAX NO. 0863-2441029)**

**CHIEF SECRETARY, TAMIL NADU (FAX NO. 044-25672304)**

**CHIEF SECRETARY, ANDAMAN & NICOBAR ISLANDS (FAX NO. 03192- 232656)**

**CHIEF SECRETARY, WEST BENGAL (FAX NO. 033-22144328)**

**CHIEF SECRETARY, PUDUCHERRY (FAX NO. 0413-2337575)**

**Sub: Deep Depression over southeast Bay of Bengal: Pre-cyclone watch for Andhra Pradesh Coast**

The deep depression over southeast Bay of Bengal moved north-northwestwards with a speed of 13 kmph during past 06 hours and lay centred at 0530 hrs IST of 14<sup>th</sup> December, 2018 over southeast Bay of Bengal near latitude 8.2°N and longitude 87.6°E, about 700 km east-southeast of Trincomalee (Sri Lanka), 960 km east-southeast of Chennai (Tamil Nadu) and 1130 km south-southeast of Machilipatnam (Andhra Pradesh). It is very likely to intensify further into a Cyclonic Storm during next 12 hours and into a Severe Cyclonic Storm in subsequent 36 hours. It is very likely to move north-northwestwards and cross Andhra Pradesh coast between Ongole and Kakinada during 17<sup>th</sup> December afternoon.

Forecast track and intensity are given in the following table:

<b>Date/Time(IST)</b>	<b>Position (Lat. °N/ long. °E)</b>	<b>Maximum sustained surface wind speed (Kmph)</b>	<b>Category of cyclonic disturbance</b>
14.12.18/0530	8.2/87.6	50-60 gusting to 70	Deep Depression
14.12.18/1130	8.8/87.0	55-65 gusting to 75	Deep Depression
14.12.18/1730	9.4/86.2	60-70 gusting to 80	Cyclonic Storm
14.12.18/2330	10.0/85.6	65-75 gusting to 85	Cyclonic Storm
15.12.18/0530	10.6/85.1	70-80 gusting to 90	Cyclonic Storm
15.12.18/1730	11.8/84.2	80-90 gusting to 100	Cyclonic Storm
16.12.18/0530	13.0/83.2	85-95 gusting to 105	Severe Cyclonic Storm
16.12.18/1730	14.2/82.4	90-100 gusting to 110	Severe Cyclonic Storm
17.12.18/0530	15.4/82.0	85-95 gusting to 105	Severe Cyclonic Storm
17.12.18/1730	16.5/81.5	80-90 gusting to 100	Cyclonic Storm
18.12.18/0530	17.5/81.2	65-75 gusting to 85	Cyclonic Storm

**Spatial rainfall distribution: Isolated: <25%, A few: 26-50%, Many: 51-75%, Most: 76-100%**

**Rainfall amount (mm): Heavy rain: 64.5 – 115.5, Very heavy rain: 115.6 – 204.4, Extremely heavy rain: 204.5 or more.**

## **Warnings:**

### **(i) Heavy rainfall warning**

- Rainfall at many places with heavy falls at isolated places likely to commence over coastal Andhra Pradesh and adjoining areas of north coastal Tamil Nadu from 15<sup>th</sup> December evening.
- Rainfall at most places with heavy to very heavy falls at a few places and extremely heavy falls ( $\geq 20$  cm) at isolated places likely over coastal Andhra Pradesh on 16<sup>th</sup> & 17<sup>th</sup> December.

### **(ii) Wind warning for Andhra Pradesh, north Tamil Nadu and Puducherry coasts**

Squally wind speed reaching 45-55 kmph gusting to 65 kmph is likely to commence along & off Andhra Pradesh, north Tamilnadu & Puducherry coasts from 15<sup>th</sup> Dec. evening. It is very likely to increase gradually becoming gale wind speed of 80-90 kmph along and off Andhra Pradesh coast from 17<sup>th</sup> December forenoon.

### **(iii) Wind warning for Sea areas**

- Squally wind speed reaching 55-65 kmph gusting to 75 kmph prevails over southeast & adjoining southwest Bay of Bengal. It is very likely to increase gradually and become gale wind speed reaching 65-75 kmph gusting to 85 kmph by 14<sup>th</sup> December evening and 80-90 kmph gusting to 100 kmph during 15<sup>th</sup> evening to 16<sup>th</sup> evening over southwest & adjoining westcentral Bay of Bengal and 80-100 kmph gusting to 110 kmph over westcentral and adjoining southwest Bay of Bengal during 16<sup>th</sup> evening to 17<sup>th</sup> evening.

### **(iv) Sea condition**

The sea condition is very rough over southeast and adjoining southwest Bay of Bengal. It is likely to become high from 14<sup>th</sup> December evening. The sea condition is very likely to be high over southwest & adjoining westcentral Bay of Bengal on 15<sup>th</sup> and high to very high over westcentral & adjoining southwest Bay of Bengal on 16<sup>th</sup> & 17<sup>th</sup> December.

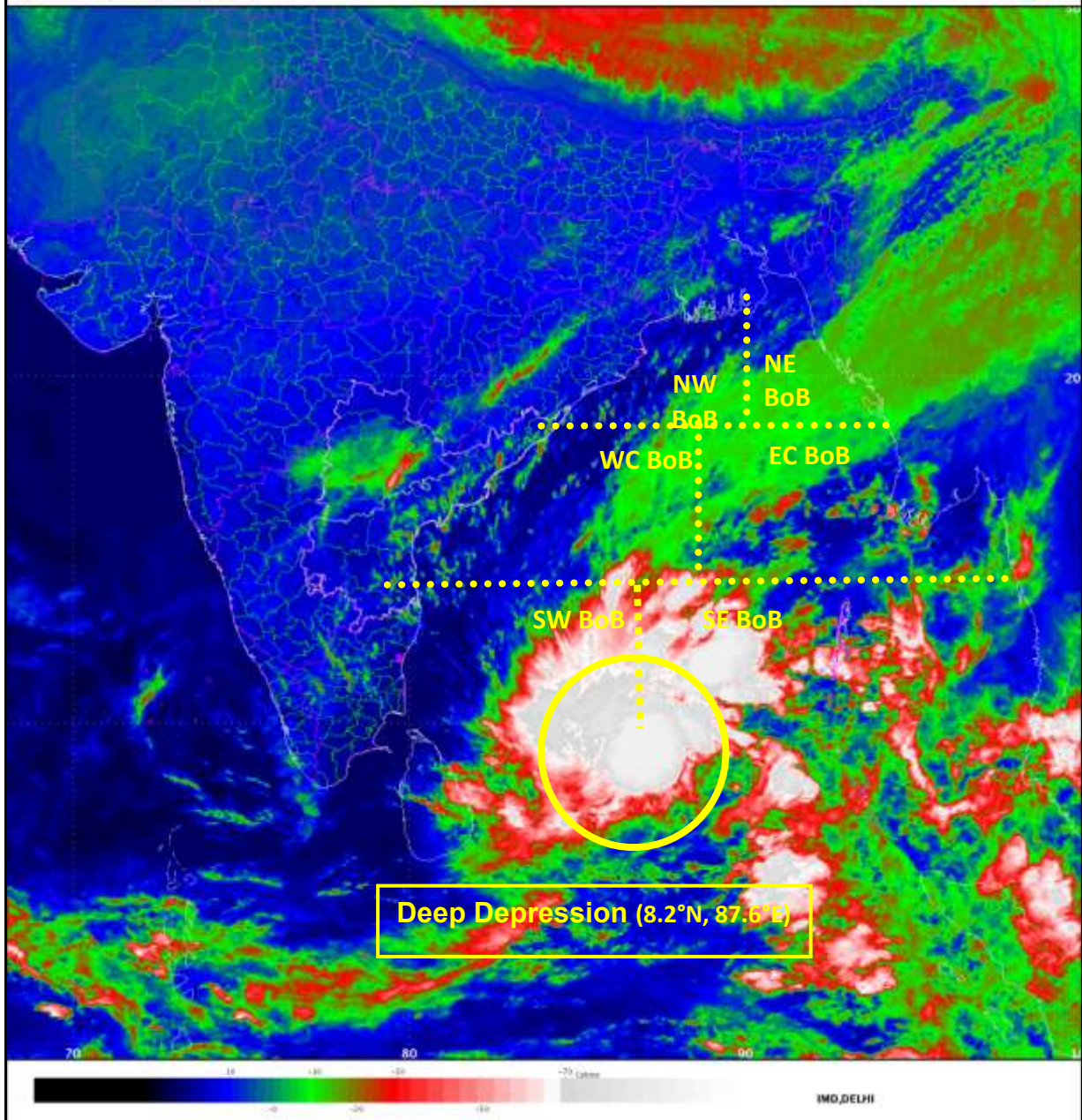
### **(v) Fishermen Warning**

- The fishermen are advised not to venture into southwest & adjoining southeast Bay of Bengal on 14<sup>th</sup>, into southwest & adjoining westcentral Bay of Bengal on 15<sup>th</sup> and westcentral & adjoining southwest Bay of Bengal on 16<sup>th</sup> and 17<sup>th</sup> December.
- Those, who are out in deep sea areas are advised to return to the coast.

*The next bulletin will be issued at 1430 hrs IST of 14<sup>th</sup> December, 2018.*

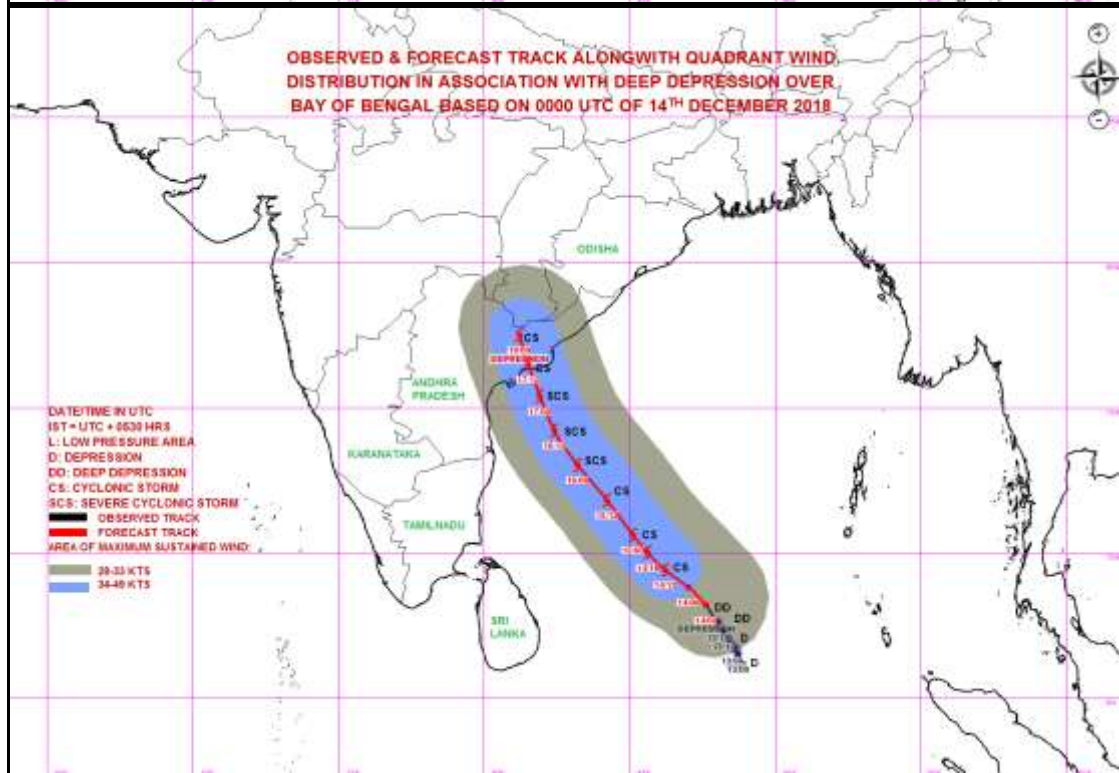
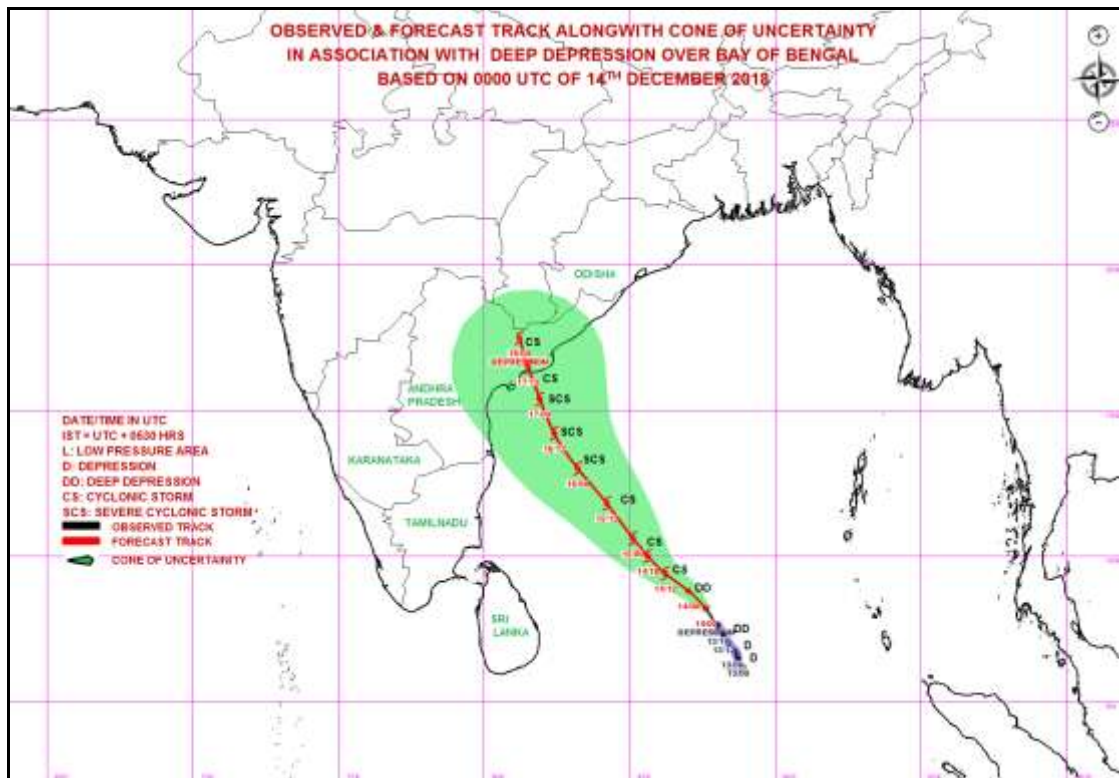
**(D. R. Pattanaik)**  
**Scientist-E, RSMC, New Delhi**

*Copy to: CRS, Pune/ ACWC Kolkata/ Chennai/ CWC Bhubaneswar/CWC Visakhapatnam*



Spatial rainfall distribution: Isolated: <25%, A few: 26-50%, Many: 51-75%, Most: 76-100%  
Rainfall amount (mm): Heavy rain: 64.5 – 115.5, Very heavy rain: 115.6 – 204.4, Extremely heavy rain: 204.5 or more.





**Spatial rainfall distribution: Isolated: <25%, A few: 26-50%, Many: 51-75%, Most: 76-100%**  
**Rainfall amount (mm): Heavy rain: 64.5 – 115.5, Very heavy rain: 115.6 – 204.4, Extremely heavy rain: 204.5 or more.**