



**India Meteorological Department
Earth System Science Organisation
(Ministry of Earth Sciences)**

BULLETIN NO. : 01 (ARB/02/2019)

TIME OF ISSUE: 1115 HOURS IST

DATED: 22.09.2019

FROM: INDIA METEOROLOGICAL DEPARTMENT (FAX NO. 24643965/24699216/24623220)

TO: CONTROL ROOM, NDM, MINISTRY OF HOME AFFAIRS (FAX.NO. 23092398/23093750)

CONTROL ROOM NDMA (FAX.NO. 26701729)

CABINET SECRETARIAT (FAX.NO.23012284, 23018638)

PS TO HON'BLE MINISTER FOR S & T AND EARTH SCIENCES (FAX NO.23316745)

SECRETARY, MOES, (FAX NO. 24629777)

H.Q. (INTEGRATED DEFENCE STAFF AND CDS) (FAX NO. 23005137/23005147)

DIRECTOR GENERAL, DOORDARSHAN (23385843)

DIRECTOR GENERAL, AIR (23421101, 23421105, 23421219)

PIB MOES (FAX NO. 23389042)

UNI (FAX NO. 23355841)

D.G. NATIONAL DISASTER RESPONSE FORCE (NDRF) (FAX NO. 26105912, 2436 3260)

DIRECTOR, PUNCTUALITY, INDIAN RAILWAYS (FAX NO. 23388503)

CHIEF SECRETARY, KERALA (FAX NO. 0471-2327176)

ADMINISTRATOR, LAKSHADWEEP ISLANDS (FAX NO. 0413-262184)

ADMINISTRATOR, UNION TERRITORY OF DAMAN & DIU (0260-2230775)

ADMINISTRATOR, UNION TERRITORY OF DADRA NAGAR HAVELI (0260-2230775)

CHIEF SECRETARY, KARNATAKA (FAX NO. 080-22258913)

CHIEF SECRETARY, GOA (FAX NO. 0832-2415201)

CHIEF SECRETARY, MAHARASHTRA (FAX NO. 022- 22028594)

CHIEF SECRETARY, GUJARAT (FAX NO. 079-23250305)

Sub: Depression over eastcentral and adjoining northeast Arabian Sea off Gujarat coast

Latest satellite imageries and surface observations indicate that a depression has formed over eastcentral and adjoining northeast Arabian sea off Gujarat coast and lay centred at 0830 hrs IST of today, the 22nd September, 2019 near latitude 19.8°N and longitude 69.4°E, about 150 km southwest of Veraval (Gujarat), 610 km south-southeast of Karachi (Pakistan) and 1220 km east-southeast of Muscat (Oman). It is very likely to intensify further into a deep depression during next 12 hours and into a cyclonic storm during subsequent 24 hours. It is very likely to move west-northwestwards towards Oman coast during next 72 hours.

Warnings:

(i) Rainfall:

- Light to moderate rainfall at many places with isolated heavy falls is likely over coastal districts of Saurashtra and Kutch during next 24 hours and decrease thereafter.

(ii) Wind warning

- Squally wind speed reaching 45-55 kmph gusting to 65 kmph very likely to prevail along & off Gujarat coast during next 48 hours.
- Squally wind speed reaching 45-55 kmph gusting to 65 kmph very likely to prevail over eastcentral and adjoining northeast Arabian Sea which is likely to become 55-65 kmph gusting to 75 kmph from today, the 22nd evening. It is likely to become gale wind speed reaching 65-75 kmph gusting to 85 kmph over northeast and adjoining eastcentral Arabian Sea from 23rd evening for subsequent 24 hours. It is likely to decrease thereafter gradually becoming squally wind speed reaching 55-65 kmph gusting to 75 kmph over northwest and adjoining westcentral Arabian Sea from 24th evening.

Spatial rainfall distribution: Isolated: <25%, A few: 26-50%, Many: 51-75%, Most: 76-100%

Rainfall amount (mm): Heavy rain: 64.5 – 115.5, Very heavy rain: 115.6 – 204.4, Extremely heavy rain: 204.5 or more.

(iii) Sea condition

The sea condition is very likely to be very rough along & off Gujarat coast during next 48 hours. It is also very likely to be very rough over eastcentral and adjoining northeast Arabian Sea on 22nd and becoming very rough to high from 23rd evening for subsequent 24 hours. It would become very rough over northwest and adjoining westcentral Arabian Sea from 23rd evening for subsequent 48 hours.

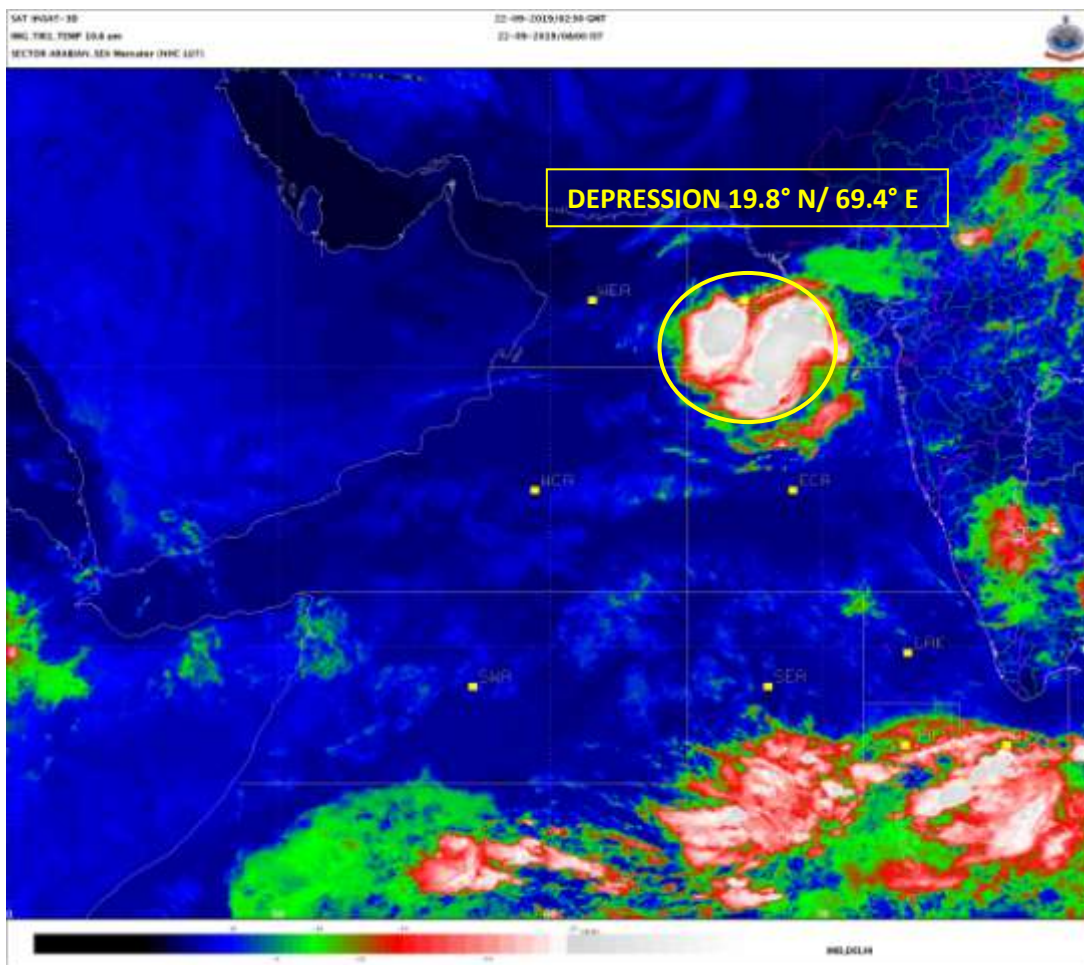
(i) Fishermen Warning

The fishermen are advised not to venture into eastcentral and adjoining northeast Arabian along & off Gujarat coast during next 48 hours. They are advised not to venture into eastcentral and adjoining northeast Arabian Sea during next 48 hours and into westcentral & adjoining northwest Arabian Sea during 23rd evening and 25th.

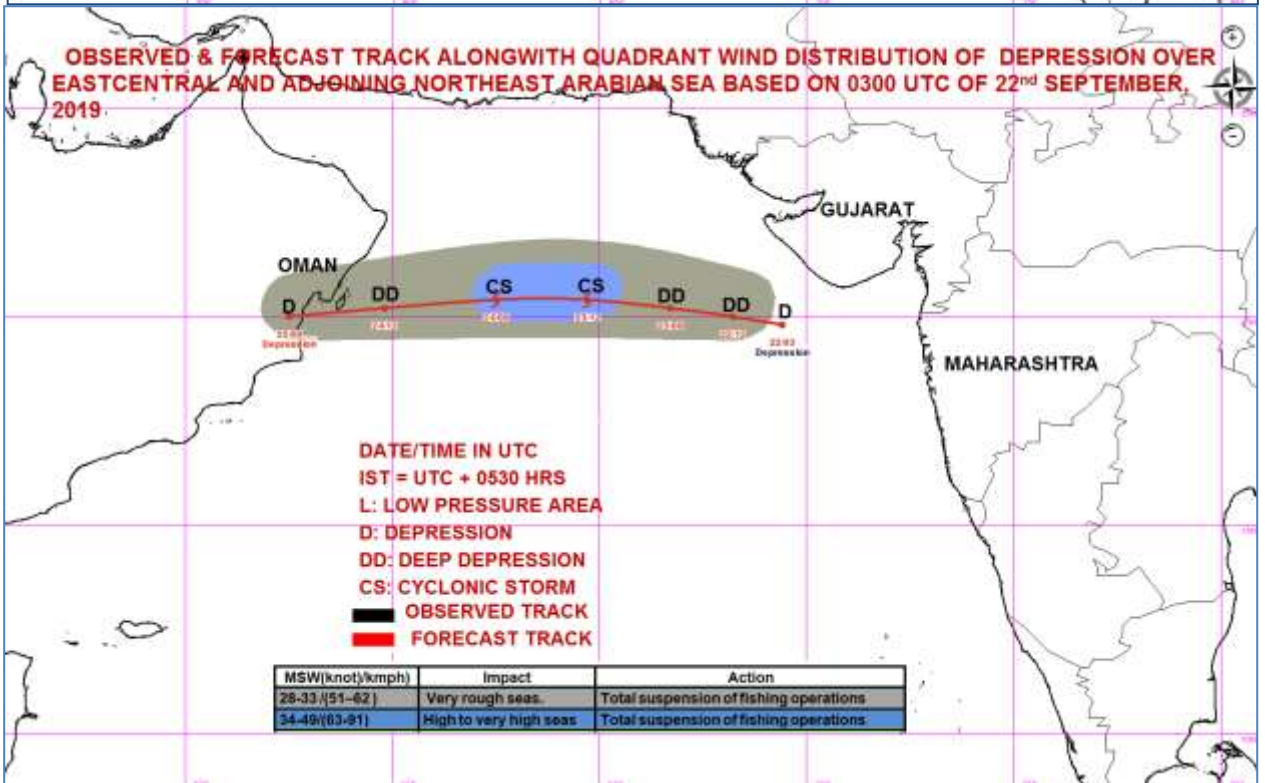
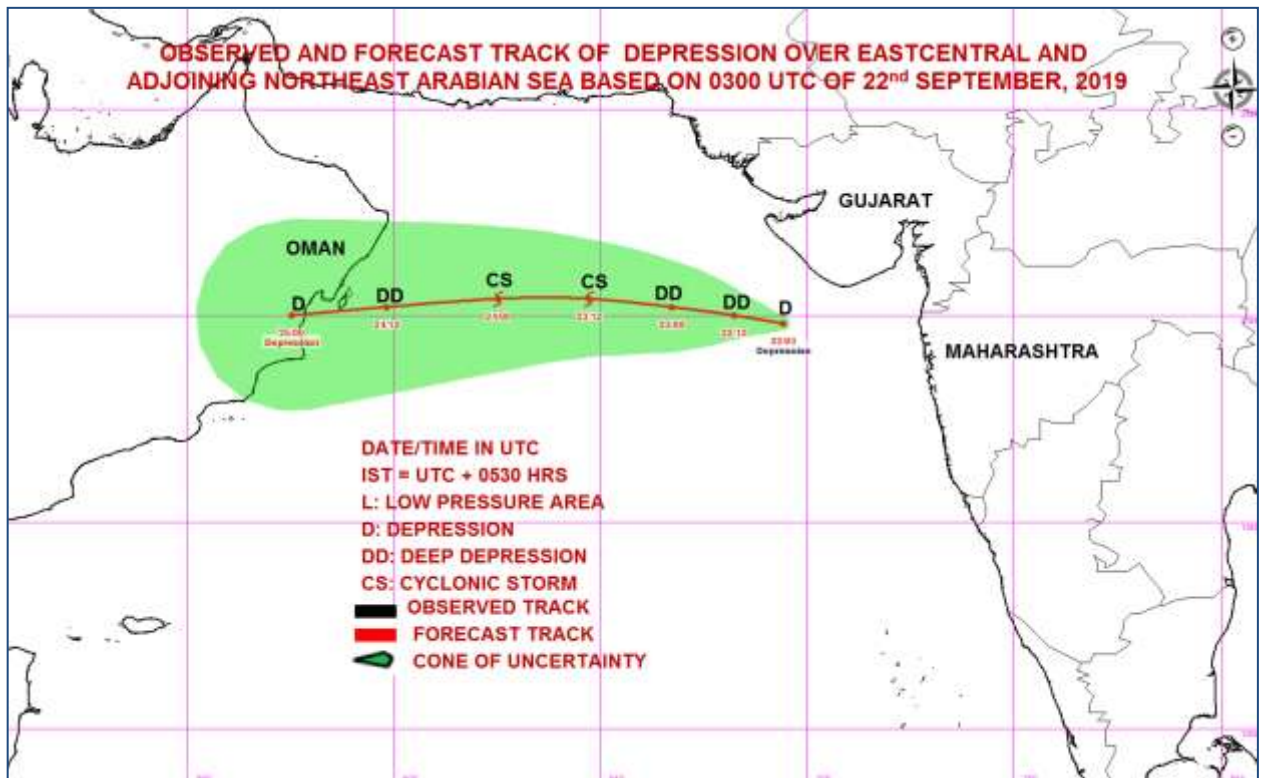
The next bulletin will be issued at 1430 hrs IST of 22nd September, 2019.

(Neetha K Gopal)
Scientist-E, RSMC, New Delhi

Copy to: CRS, Pune/ ACWC Chennai/ ACWC Mumbai/ MC Goa/ MC Bengaluru/ CWC Ahmedabad/ Thiruvananthapuram.



Spatial rainfall distribution: Isolated: <25%, A few: 26-50%, Many: 51-75%, Most: 76-100%
Rainfall amount (mm): Heavy rain: 64.5 – 115.5, Very heavy rain: 115.6 – 204.4, Extremely heavy rain: 204.5 or more.



MSW(knot)/kmph)	Impact	Action
28-33/(51-62)	Very rough seas.	Total suspension of fishing operations
34-49/(63-91)	High to very high seas	Total suspension of fishing operations
50-63/(92-117)	Very High seas	Total suspension of fishing operations
≥ 64 (≥118)	Phenomenal	Total suspension of fishing operations

Spatial rainfall distribution: Isolated: <25%, A few: 26-50%, Many: 51-75%, Most: 76-100%
 Rainfall amount (mm): Heavy rain: 64.5 – 115.5, Very heavy rain: 115.6 – 204.4, Extremely heavy rain: 204.5 or more.