



India Meteorological Department
(Ministry of Earth Sciences)

BULLETIN NO.: 03(ARB/01/2021)

TIME OF ISSUE: 1650 HOURS IST

DATED: 14.05.2021

FROM: INDIA METEOROLOGICAL DEPARTMENT (FAX NO. 24643965/24699216/24623220)

TO: CONTROL ROOM, NDM, MINISTRY OF HOME AFFAIRS (FAX.NO. 23092398/23093750)

CONTROL ROOM NDMA (FAX.NO. 26701729)

CABINET SECRETARIAT (FAX.NO.23012284, 23018638)

PS TO HON'BLE MINISTER FOR S & T AND EARTH SCIENCES (FAX NO.23316745)

SECRETARY, MOES (FAX NO. 24629777)

H.Q. (INTEGRATED DEFENCE STAFF AND CDS) (FAX NO. 23005137/23005147)

DIRECTOR GENERAL, DOORDARSHAN (23385843) DIRECTOR GENERAL, AIR (23421101, 23421105, 23421219)

PIB MOES (FAX NO. 23389042)

UNI (FAX NO. 23355841)

D.G. NATIONAL DISASTER RESPONSE FORCE (NDRF) (FAX NO. 26105912, 2436 3260)

DIRECTOR, PUNCTUALITY, INDIAN RAILWAYS (FAX NO. 23388503)

CHIEF SECRETARY, KERALA (FAX NO. 0471-2327176)

ADMINISTRATOR, LAKSHADWEEP ISLANDS (FAX NO. 0413-262184)

CHIEF SECRETARY, KARNATAKA (FAX NO. 080-22258913)

CHIEF SECRETARY, GOA (FAX NO. 0832-2415201)

CHIEF SECRETARY, MAHARASHTRA (FAX NO. 022- 22028594)

CHIEF SECRETARY, GUJARAT (FAX NO. 079-23250305)

CHIEF SECRETARY, DAMAN & DIU (FAX NO. 0260-2230775)

CHIEF SECRETARY, DADRA & NAGAR HAVELI (FAX NO. 0260-2645466)

CHIEF SECRETARY, TAMIL (FAX NO. 044-25672304)

Sub: Depression intensified into a Deep Depression over Lakshadweep area and adjoining southeast & east central Arabian Sea: Pre-Cyclone watch for south Gujarat & Diu coasts

The **Depression** over Lakshadweep area moved north-northeastwards with a speed of 19 kmph during past 6 hours, intensified into a Deep Depression and lay centred at 1430 hours IST of today, the 14th May, 2021 over Lakshadweep area and adjoining southeast & eastcentral Arabian Sea near latitude 11.5°N and longitude 72.5°E, about 50 km north-northwest of Amini Divi, 310 km west-southwest of Kannur (Kerala), 1060 km south-southeast of Veraval (Gujarat).

It is very likely to intensify into a Cyclonic Storm during next 12 hours and is very likely to intensify further during the subsequent 24 hours. It is very likely to move north-northwestwards and reach near Gujarat coast by 18th May morning.

Forecast track and intensity are given in the following table:

Date/Time(IST)	Position (Lat. °N/ long. °E)	Maximum sustained surface wind speed (Kmph)	Category of cyclonic disturbance
14.05.21/1430	11.5/72.5	50-60 gusting to 70	Deep Depression
14.05.21/2330	12.2/72.7	55-65 gusting to 75	Deep Depression
15.05.21/1130	13.7/72.4	80-90 gusting to 100	Cyclonic Storm
15.05.21/2330	15.1/72.0	105-115 gusting to 125	Severe Cyclonic Storm
16.05.21/1130	16.6/71.6	125-135 gusting to 150	Very Severe Cyclonic Storm
16.05.21/2330	18.1/71.0	135-145 gusting to 160	Very Severe Cyclonic Storm
17.05.21/1130	19.6/70.4	150-160 gusting to 175	Very Severe Cyclonic Storm

Spatial rainfall distribution: Isolated: <25%, A few: 26-50%, Many: 51-75%, Most: 76-100%

Rainfall amount (mm): Heavy rain: 64.5 – 115.5, Very heavy rain: 115.6 – 204.4, Extremely heavy rain: 204.5 or more.

Warnings:

(i) Rainfall:

- **Lakshadweep Islands:** Light to moderate rainfall at most places with heavy to very heavy falls at a few places with extremely heavy falls (≥ 20 cm) at isolated places very likely on 14th May, heavy to very heavy falls at isolated places on 15th May and heavy falls at isolated places on 16th May.
- **Kerala:** Light to moderate rainfall at most places with heavy to very heavy falls at a few places and extremely heavy falls (≥ 20 cm) at isolated places on 14th, heavy to very heavy falls at a few places 15th and heavy to very heavy falls at isolated places on 16th & 17th May.
- **Tamil Nadu (Ghat districts):** Light to moderate rainfall at many places with heavy to very heavy falls & extremely heavy falls at isolated places very likely on 14th and heavy to very heavy falls at isolated places on 15th May.
- **Karnataka (coastal & adjoining Ghat districts):** Light to moderate rainfall at most places with heavy to very heavy falls at a few places with extremely heavy falls at isolated places on 14th & 15th and heavy falls at isolated places on 16th.
- **Konkan & Goa:** Light to moderate rainfall at a few places with heavy falls at isolated places very likely over Goa on 14th, at most places with heavy to very heavy falls at a few places over south Konkan & Goa and heavy to very heavy falls at isolated places over north Konkan on 15th and heavy to very heavy falls at isolated places on 16th.
- **Gujarat:** Light to moderate rainfall at many places with heavy falls at isolated places very likely over coastal districts of Suarashtra on 16th, at most places with heavy to very heavy falls at a few places on 17th and with heavy to very heavy falls at a few places extremely heavy falls (≥ 20 cm) at isolated places over Saurashtra & Kutch on 18th.
- **Southwest Rajasthan:** Light to moderate rainfall at many places with heavy falls at isolated places very likely on 17th & 18th May.

(ii) Wind warning

- Squally weather with wind speed reaching 50-60 kmph gusting to 70 kmph is very likely over southeast Arabian Sea and adjoining Lakshadweep – Maldives area and equatorial Indian Ocean on 14th May.
- It is likely to increase gradually becoming Gale wind speed reaching 70 – 80 kmph gusting to 90 kmph over east-central Arabian Sea and adjoining southeast Arabian Sea and Lakshadweep area from 15th May morning.
- Squally wind speed reaching 45-55 kmph gusting to 65 kmph likely along & off Kerala coast on 14th May and 50-60 kmph gusting to 70 kmph along & off Kerala - Karnataka coasts on 15th May.
- Squally wind speed reaching 40-50 kmph gusting to 60 kmph likely along & off south Maharashtra & Goa coasts on 15th and Gale winds speed reaching 60-70 kmph gusting to 80 kmph along & off south Maharashtra –Goa coasts on 16th May.
- Squally wind speed reaching 40-50 kmph gusting to 60 kmph likely over northeast Arabian Sea and along & off south Gujarat & Daman and Diu coasts on 17th morning and gradually increase

Spatial rainfall distribution: Isolated: <25%, A few: 26-50%, Many: 51-75%, Most: 76-100%

Rainfall amount (mm): Heavy rain: 64.5 – 115.5, Very heavy rain: 115.6 – 204.4, Extremely heavy rain: 204.5 or more.

becoming Gale winds speed reaching 90-100 kmph gusting to 115 kmph over northeast Arabian Sea along & off Gujarat coast from the early hours of 18th May and increase gradually thereafter till 18th morning.

(iii) Sea condition

- Sea conditions over southeast Arabian Sea and adjoining Lakshadweep - Maldives area & equatorial Indian Ocean will be rough to very rough on 14th May.
- Sea condition over eastcentral Arabian Sea will be High to very High on 15th & 16th May and over northeast Arabian Sea from 17th May.
- Sea conditions will be rough to very rough over Comorin area and along & off Kerala coast on 14th & 15th, very rough to High over east central Arabian Sea along & off Karnataka coast on 15th May and Maharashtra – Goa coasts on 15th & 16th May. It is very likely to be very rough to High over northeast Arabian Sea along & off south Gujarat coast from 17th May morning and very high to Phenomenal from 18th morning.

(iv) Tidal wave Warning:

- Tidal wave of about 1 meter height above the astronomical tide is very likely to inundate low lying areas of Lakshadweep Islands on 15th & 16th May.

(v) Fishermen Warning

- The fishermen are advised not to venture into southeast Arabian Sea, Lakshadweep – Maldives areas, east central Arabian Sea along & off Karnataka coast, eastcentral Arabian Sea and along & off Maharashtra – Goa coasts and into eastcentral & adjoining northeast Arabian Sea along & off Gujarat coast till 18th May.
- Those who are out at Sea over north & adjoining eastcentral Arabian Sea are advised to return to the coast.

(vi) Impact expected over southeast, eastcentral & northeast Arabian Sea, Lakshadweep – Maldives area & Lakshadweep Islands and along & off Kerala, Karnataka, Goa, Maharashtra, Gujarat coasts and also the coastal & adjoining districts of all these States:

- Very rough to high seas, squally weather and gale winds around the system centre will affect shipping vessels and fishing operations.
- Inundation of low lying areas of the Islands of Lakshadweep during 14th to 16th May.
- Very heavy to extremely heavy rainfall causing flash floods & landslides over the coastal districts of Kerala, Karnataka & Goa during 14th – 16th May and Saurashtra, Kutch during 18th – 19th May.
- Thunder squalls & Lightning could cause adverse impact on Human & Livestock as well as damage to Loose & unsecured structures along the coast line.

(vii) Advisory:

- Fishermen are advised not to venture into Arabian Sea during 14th – 18th May
- Ships are advised to avoid the area
- Ports along the west coast of India may take necessary precautions.
- Naval base operations may maintain necessary pre-cautions
- Tourism activities may be restricted over the area specified for squally weather & rough Sea warning.

The next bulletin will be issued at 2030 hrs IST of today, the 14th May, 2021.

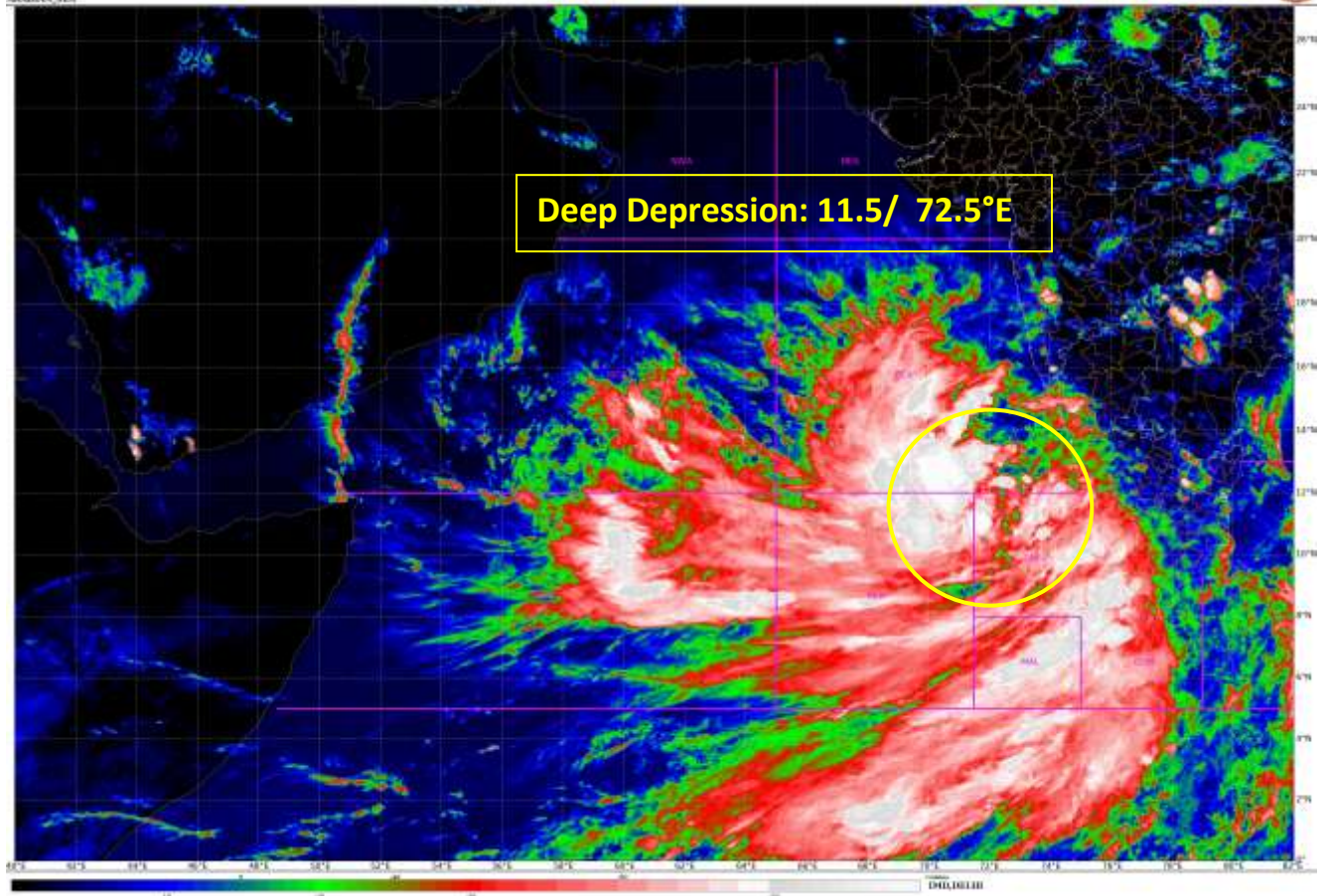
(Sunitha Devi. S)
Scientist-F, RSMC, New Delhi

Copy to: ACWC Chennai/ ACWC Mumbai/ MC Goa/ MC Bengaluru/ CWC Ahmedabad/ Thiruvananthapuram.

Spatial rainfall distribution: Isolated: <25%, A few: 26-50%, Many: 51-75%, Most: 76-100%
Rainfall amount (mm): Heavy rain: 64.5 – 115.5, Very heavy rain: 115.6 – 204.4, Extremely heavy rain: 204.5 or more.

SAT : INSAT-3DR IMG
IMG_TERR_TEMP 0.0 um
ARABIAN SEA

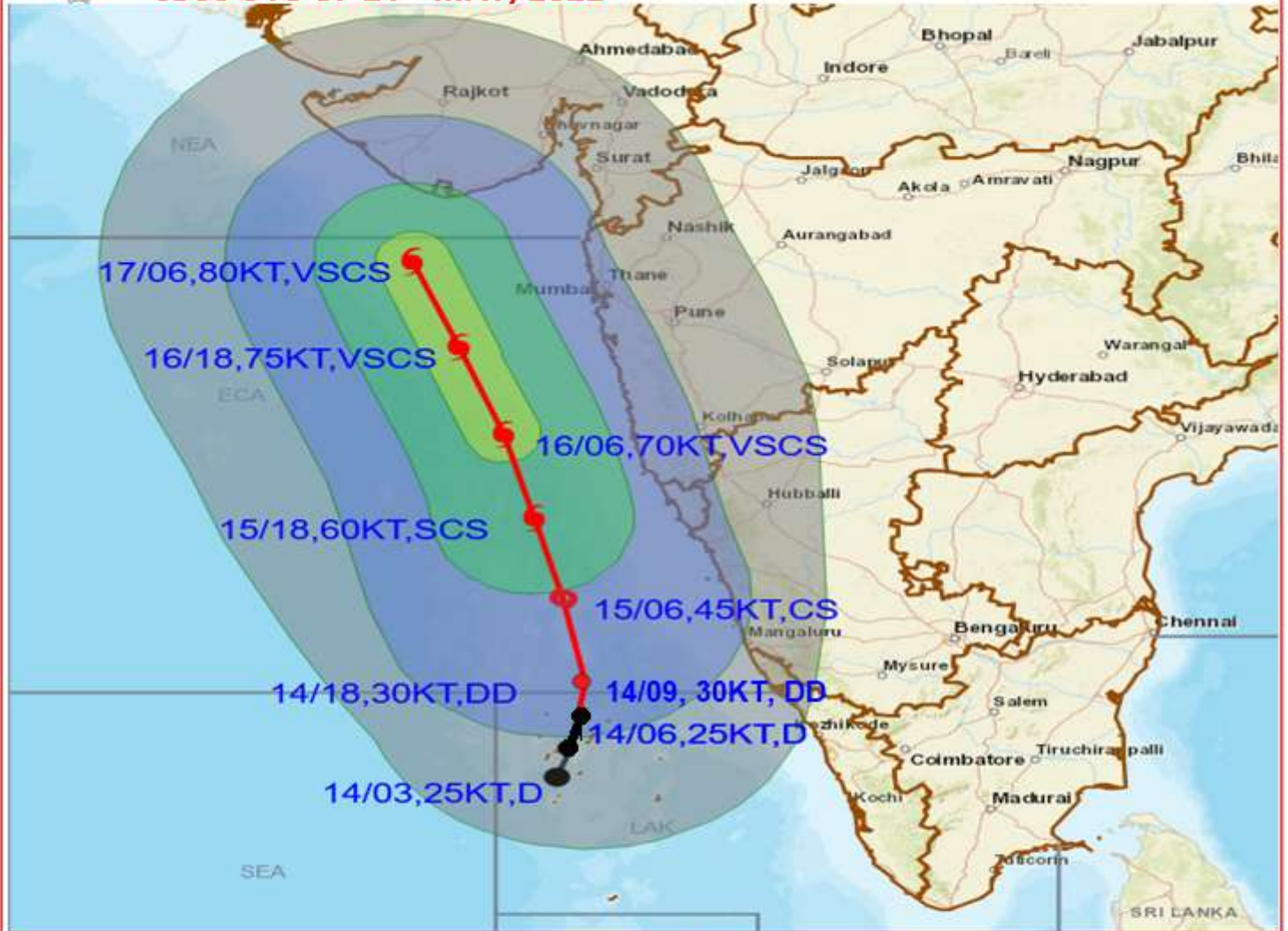
14-05-2023(11015 to 1042) GMT
14-05-2023(15:35 to 18:21) IST



Spatial rainfall distribution: Isolated: <25%, A few: 26-50%, Many: 51-75%, Most: 76-100%
Rainfall amount (mm): Heavy rain: 64.5 – 115.5, Very heavy rain: 115.6 – 204.4, Extremely heavy rain: 204.5 or more.



OBSERVED AND FORECAST TRACK ALONGWITH QUADRANT WIND DISTRIBUTION OF DEEP DEPRESSION OVER LAKSHADWEEP BASED ON 0900 UTC OF 14TH MAY, 2021



DATE/TIME IN UTC
IST=UTC + 0530

L: LOW PRESSURE AREA
WML: WELL MARKED LOW PRESSURE AREA
D: DEPRESSION (17-27 KT)
DD: DEEP DEPRESSION (28-33 KT)
CS: CYCLONIC STORM (34-47 KT)
SCS: SEVERE CYCLONIC STORM (48-63KT)
VSCS: VERY SEVERE CYCLONIC STORM (64-89 KT)
ESCS: EXTREMELY SEVERE CYCLONIC STORM (90-119 KT)
SuCS: SUPER CYCLONIC STORM (\geq 120 KT)

● LESS THAN 34 KT
○ 34-47 KT
● \geq 48 KT
— OBSERVED TRACK
— FORECAST TRACK
— CONE OF UNCERTAINTY
AREA OF MAXIMUM SUSTAINED WIND SPEED:
■ 28-33 KT (52-61 KMPH)
■ 34-49 KT (62-91 KMPH)
■ 50-63 KT (92-117 KMPH)
■ \geq 64 KT (\geq 118 KMPH)

IMPACT OVER THE SEA

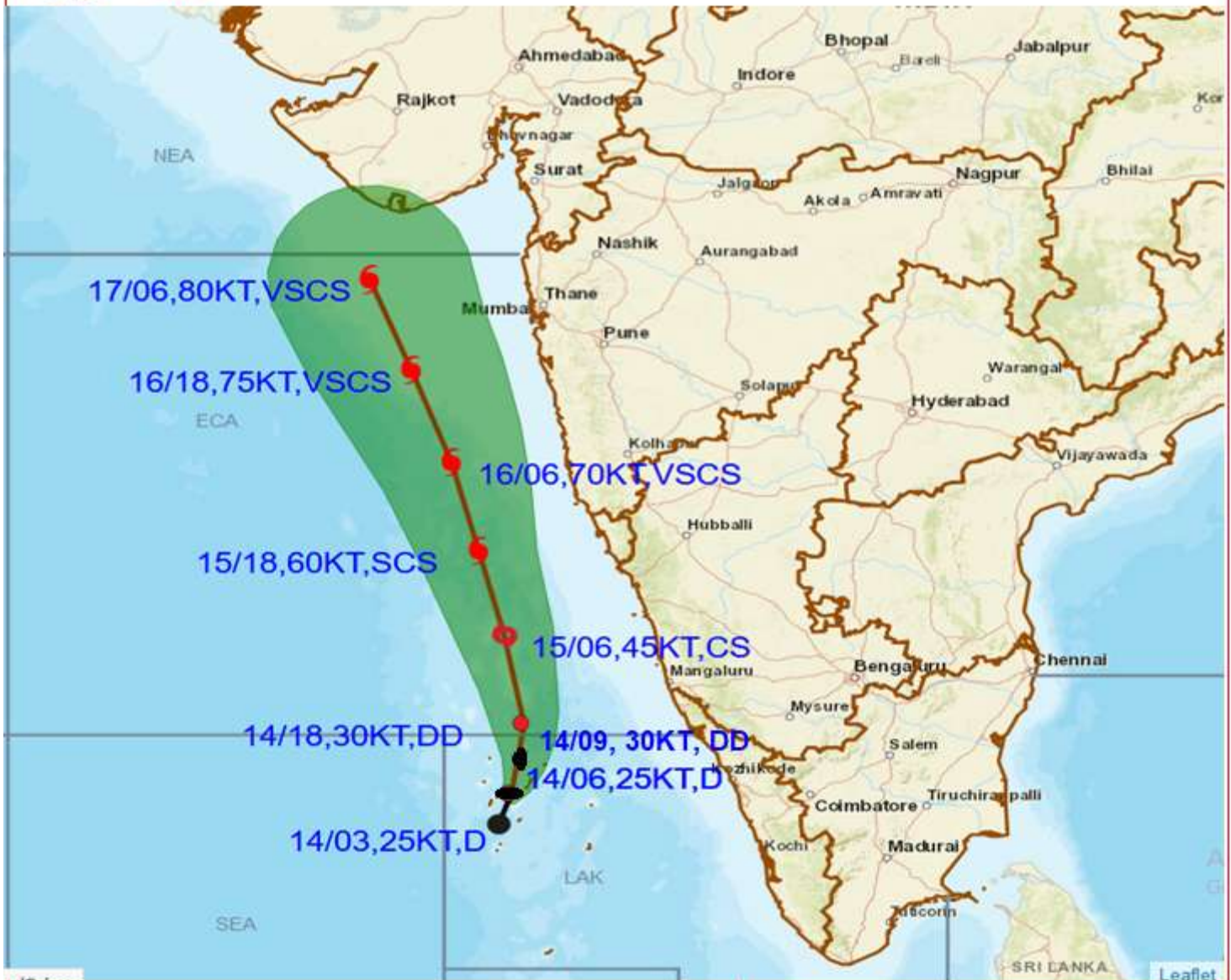
MSW (knot/kmph)	Impact	Action
28-33 (52-61)	Very rough seas	Total suspension of fishing operations
34-49 (62-91)	High to very high seas	Total suspension of fishing operations
50-63 (92-117)	Very high seas	Total suspension of fishing operations
\geq 64 (\geq 118)	Phenomenal	Total suspension of fishing operations

Spatial rainfall distribution: Isolated: <25%, A few: 26-50%, Many: 51-75%, Most: 76-100%

Rainfall amount (mm): Heavy rain: 64.5 – 115.5, Very heavy rain: 115.6 – 204.4, Extremely heavy rain: 204.5 or more.



OBSERVED AND FORECAST TRACK ALONGWITH CONE OF UNCERTAINTY OF DEEP DEPRESSION OVER LAKSHADWEEP BASED ON 0900 UTC OF 14TH MAY, 2021



DATE/TIME IN UTC

IST=UTC + 0530

L: LOW PRESSURE AREA

WML: WELL MARKED LOW PRESSURE AREA

D: DEPRESSION (17-27 KT)

DD: DEEP DEPRESSION (28-33 KT)

CS: CYCLONIC STORM (34-47 KT)

SCS: SEVERE CYCLONIC STORM (48-63KT)

VSCS: VERY SEVERE CYCLONIC STORM (64-89 KT)

ESCS: EXTREMELY SEVERE CYCLONIC STORM (90-119 KT)

SuCS: SUPER CYCLONIC STORM (\geq 120 KT)

LESS THAN 34 KT

34-47 KT

\geq 48 KT

OBSERVED TRACK

FORECAST TRACK

CONE OF UNCERTAINTY

Spatial rainfall distribution: Isolated: <25%, A few: 26-50%, Many: 51-75%, Most: 76-100%

Rainfall amount (mm): Heavy rain: 64.5 – 115.5, Very heavy rain: 115.6 – 204.4, Extremely heavy rain: 204.5 or more.

Spatial rainfall distribution: Isolated: <25%, A few: 26-50%, Many: 51-75%, Most: 76-100%
Rainfall amount (mm): Heavy rain: 64.5 – 115.5, Very heavy rain: 115.6 – 204.4, Extremely heavy rain: 204.5 or more.